

Privately owned computers

AirUWS-Lite is the University's primary wireless network. This fact sheet describes connecting to AirUWS-Lite using Windows Vista on a privately owned laptop.


AirUWS on the web: <http://www.uws.edu.au/airuws>

AirUWS-Lite is much easier to connect to, and is compatible with more equipment than the older AirUWS network (which remains available). It has been assumed that readers will be familiar with using Windows Vista.



Your use of AirUWS-Lite is subject to the University's IT Acceptable Use of Resources Policy.

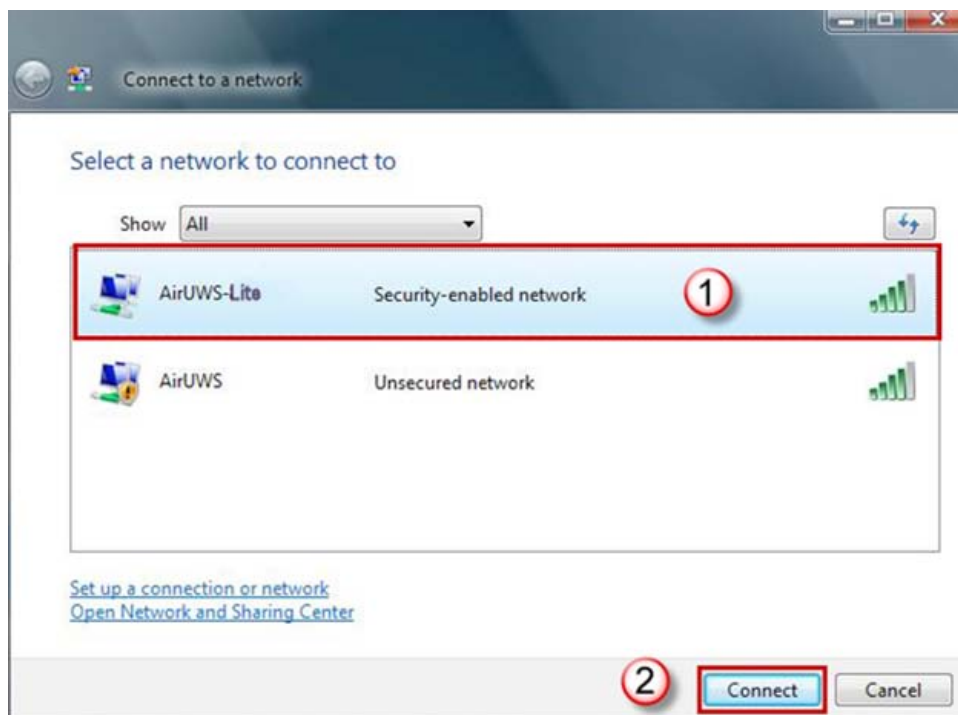
Connecting

Right click the system tray's wireless network icon,  or , and select **Connect to Network**.



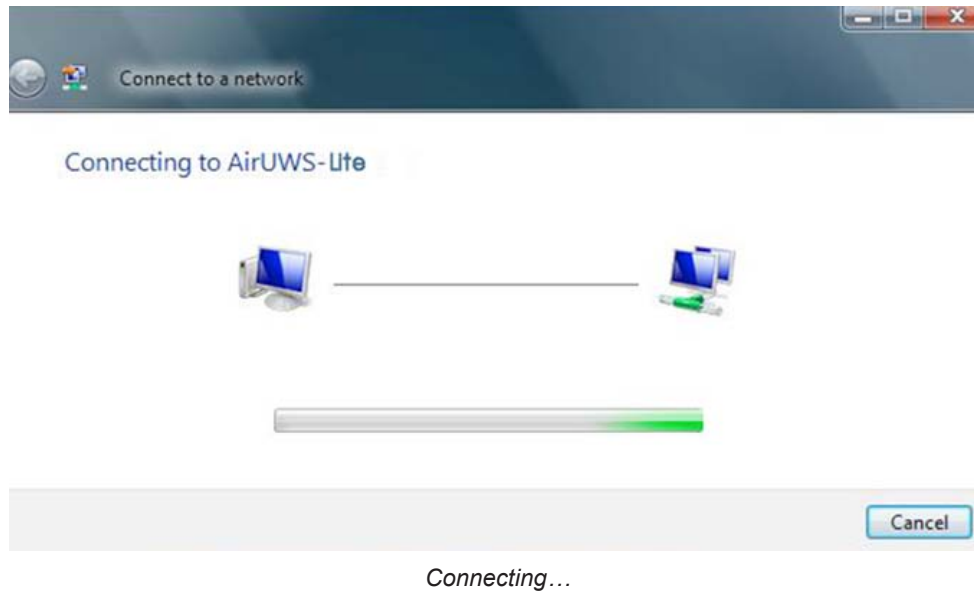
Right click the wireless icon

Select **AirUWS-Lite** and click **Connect**.

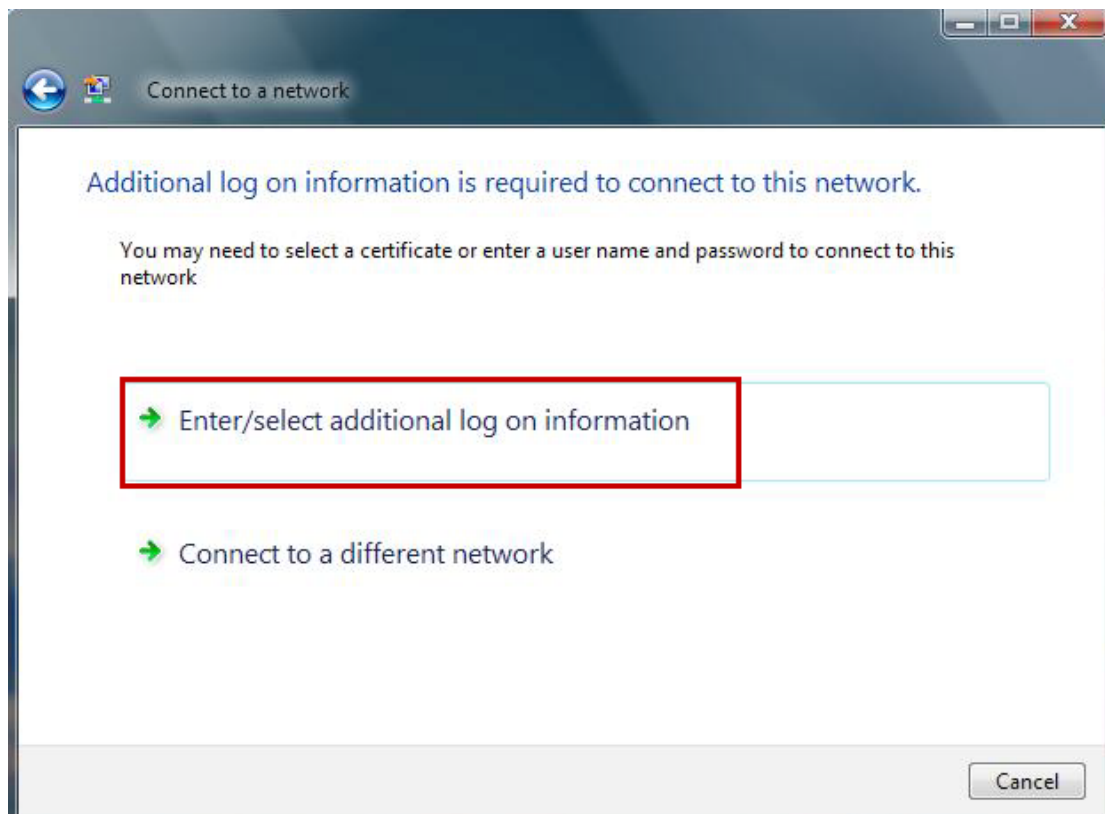


Select AirUWS-Lite and press Connect

The following window appears while your laptop connects to **AirUWS-Lite**.

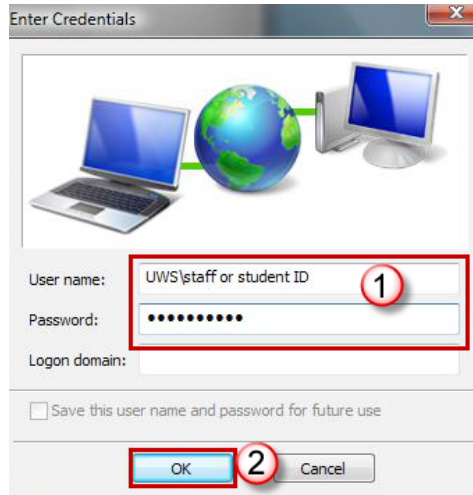


When the next window appears, click **Enter/select additional log on information**.



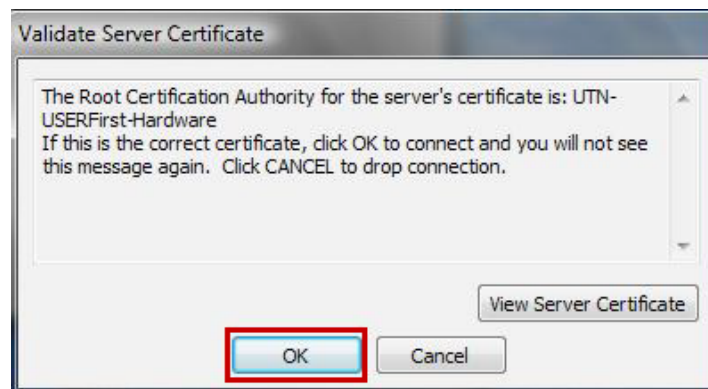
Click Enter/select additional log on information

You will be prompted for your username and password. Enter your MyUWSAccount login credentials and press **OK**.



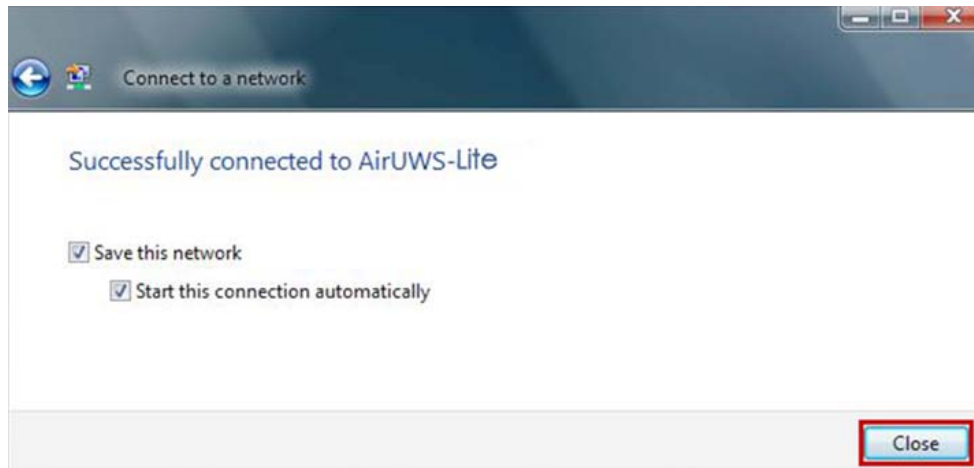
Enter your MyUWSAccount credentials and press OK

When the Validate Server Certificate message pops up, press **OK** to continue.



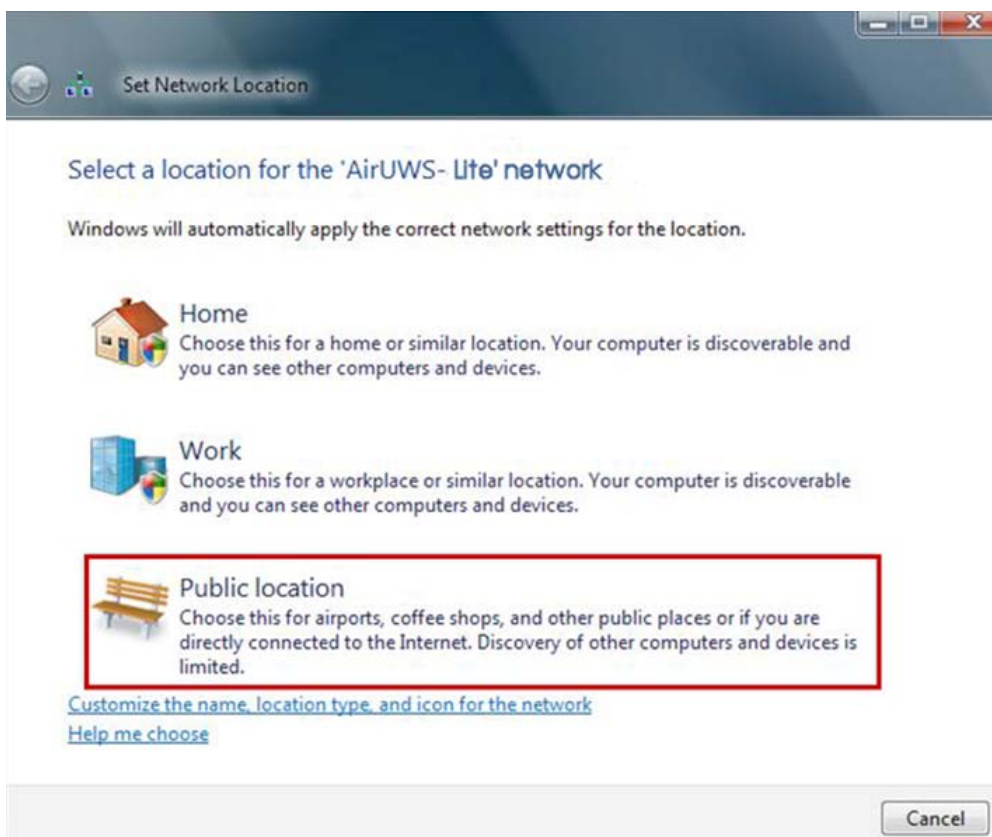
Press OK to validate the certificate

When you have successfully connected to AirWS-Lite, the following window appears. Ticking Save this Network or Start this connection automatically is optional. Press **Close**.



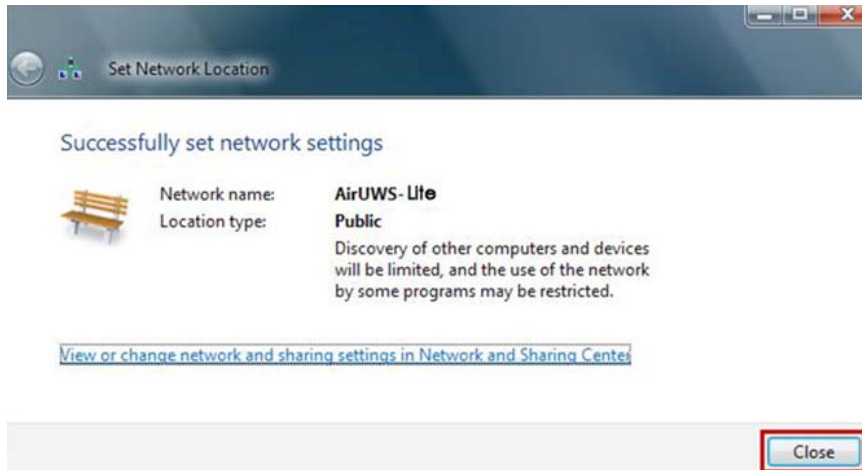
Press Close

The following window appears. Click **Public Location**.



Click Public Location

The next window shows that you have succeeded. Click **Close**.



Click Close

Proxy Settings

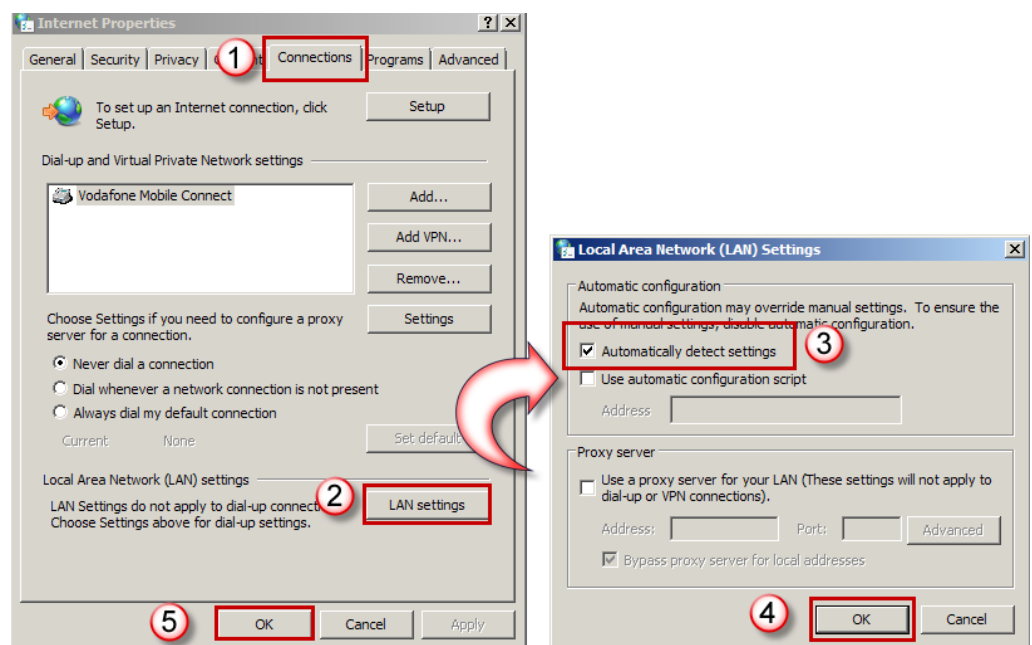


You will need to change the proxy settings before accessing the web. Open Windows **Control Panel**. Double click the **Internet Options** icon. The Internet Properties window opens.

Select the **Connections** tab, and press the **LAN settings** button. The LAN Settings window opens.

Tick **Automatically detect settings** and press **OK**. Press **OK** again.

For non-UWS use, you may need to reset the proxy settings to those recommended by your Internet Services Provider.



Check you are using the correct proxy settings

Access the Web

Open Internet Explorer. You will be prompted to enter your username and password. Enter your **MyUWSAccount** credentials and press **OK**.

You are now able to use the web normally.

Note: If you open a new browser window you will be prompted for your username and password again. If so, enter your MyUWSAccount credentials and press **OK**.



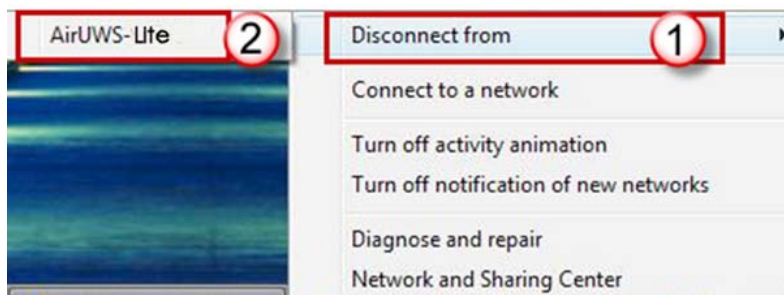
Enter your MyUWSAccount credentials and press OK



Be aware that some auto-updating programs (eg, antivirus and Windows updates) are unable to update via AirUWS-Lite – be sure to continue to connect outside of AirUWS-Lite to receive these important updates.

Disconnecting

If you leave the coverage area, you'll be automatically disconnected. Alternatively, **turn your wireless hardware off**, or right click the wireless network icon in the system tray and select **Disconnect from**, then **AirUWS-Lite** from the menu that appears.



Select Disconnect from, then AirUWS-Lite



IT Service Desk	
Phone:	02 9852 5111 (ext 5111)
Email:	itservicedesk@uws.edu.au
Web:	http://www.uws.edu.au/itservicedesk
Self Service job logging:	http://itsm.uws.edu.au
UWS IT Services Catalogue:	http://www.uws.edu.au/its
ITS Fact Sheets	http://www.uws.edu.au/itfactsheets