

network settings (proxy) - macintosh

OSX provides a central location for proxy settings, so you shouldn't have to configure applications individually. However, you will still need to set the proxy for each type of network connection you use at UWS.

If you do not configure your web browser to use the UWS proxy while using a UWS network, you will not be able to visit any external web sites.

There are some differences between versions of OSX, but the general actions you take to set the proxy will remain the same.



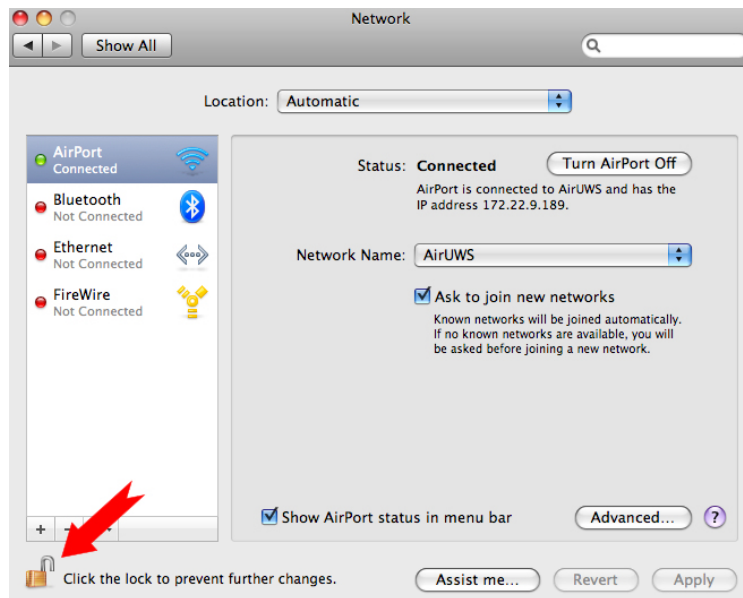
Mac desktop icons

Login to your Mac and open **System Preferences**.



System Preferences screen

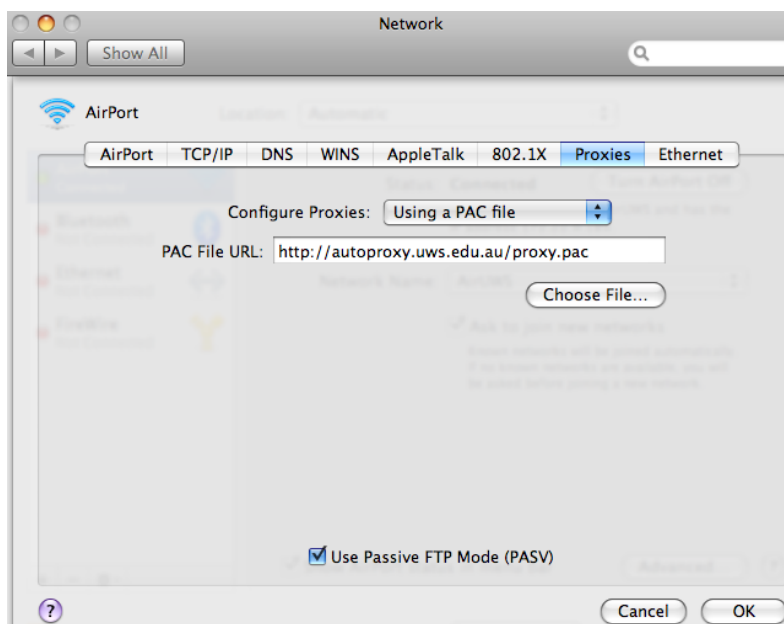
Click the **Network** icon and the Network screen will appear.



Network screen

Note: If the padlock (arrowed) is locked, you'll need to click the padlock and enter your Mac's **admin password** to make changes to these settings.

From the above screen, select either AirPort (as shown) or Ethernet. UWS proxy settings are the same for AirPort and Ethernet connections, but need to be set individually. After selecting the connection type press **Advanced....**



Advanced screen, Proxies selected

When the advanced screen opens, click the **Proxies** button and the view will change to that shown above.

From the Configure Proxies drop down menu, choose **Using a PAC file**.

In the PAC file URL: box, enter <http://autoproxy.uws.edu.au/proxy.pac>

Press **OK**. The advanced screen will close, and you'll be returned to the Network screen. If required, you can now repeat the process for any other network connections you are using. When finished, press the **Apply** button to apply the changes. Close the Network screen.

Restart Safari to ensure the changes are recognised by the browser.

Remember: You must repeat the above steps to set the proxy for each network connection you use. **Ethernet** and **AirPort** networks are available at UWS. There is no need to set the proxy for network connections you **don't** use.



For off campus internet access, use the proxy settings recommended by your Internet Services Provider.

Manual proxy

Manually setting your browser's proxy configuration is no longer recommended or supported at UWS. Undertake at your own risk.

Software specific proxy settings

Provided for information only - should not be required for Mac OSX users. In order to receive updates, some software may require users to enter proxy details into the software itself.

Proxy address to use: **proxy.uws.edu.au**

Port: **3128**

If required, enter you user name and password where indicated.



IT Service Desk	
Phone:	02 9852 5111 (ext 5111)
Email:	itservicedesk@uws.edu.au
Web:	http://www.uws.edu.au/itservicedesk
Self Service job logging:	http://itsm.uws.edu.au
UWS IT Services Catalogue:	http://www.uws.edu.au/its
ITS Fact Sheets	http://www.uws.edu.au/itfactsheets