

AirUWS-Lite is the University's primary wireless network. This fact sheet describes connecting to AirUWS-Lite using an iPad.

Please note that iPads cannot connect to the older network, AirUWS, which continues to operate. It has been assumed that readers will be familiar with operating their iPad.

AirUWS-Lite on the web: <http://www.uws.edu.au/airuws>



Your use of AirUWS-Lite is subject to the University's IT Acceptable Use of Resources Policy.

Connecting



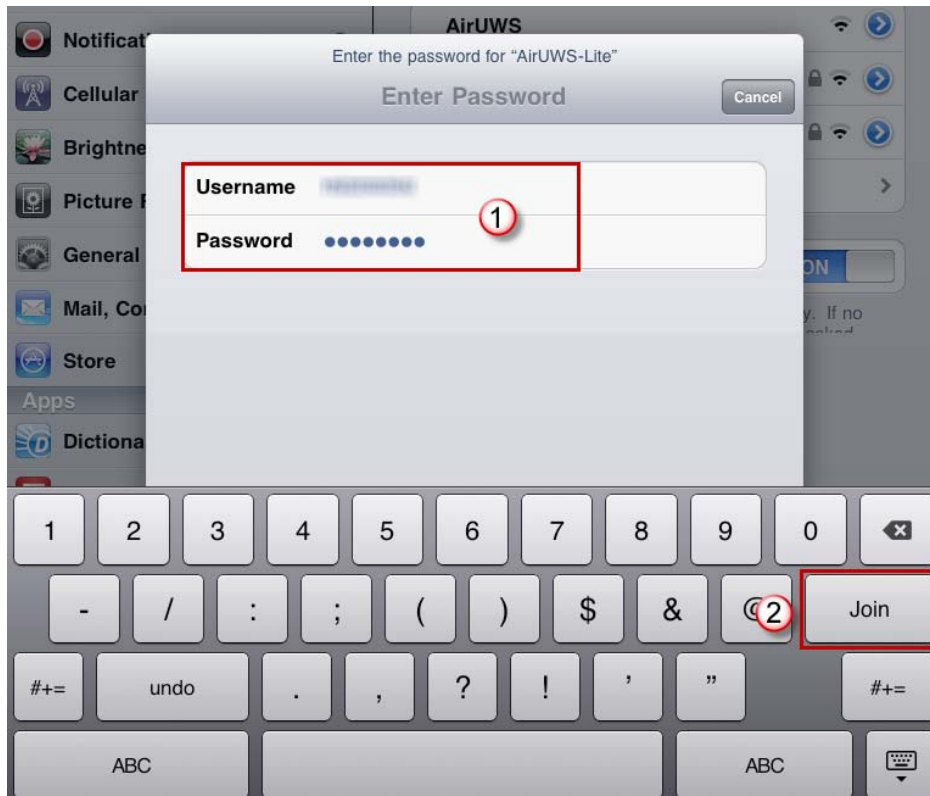
Tap the **Settings** icon on your home screen.

From the **Settings** menu, tap **Wi-Fi**. Check that Wi-Fi is **ON** and tap **AirUWS-Lite**.



Turn Wi-Fi ON (1) and tap AirUWS-Lite (2)

You will be prompted for your username and password. Enter your MyUWSAccount credentials and tap **Join**.



Enter your MyUWSAccount credentials (1) and tap Join (2)

If a certificate verification similar to the following appears, tap **Accept**.



Tap Accept

Tap the **blue arrow** next to AirUWS-Lite to access the network's settings.



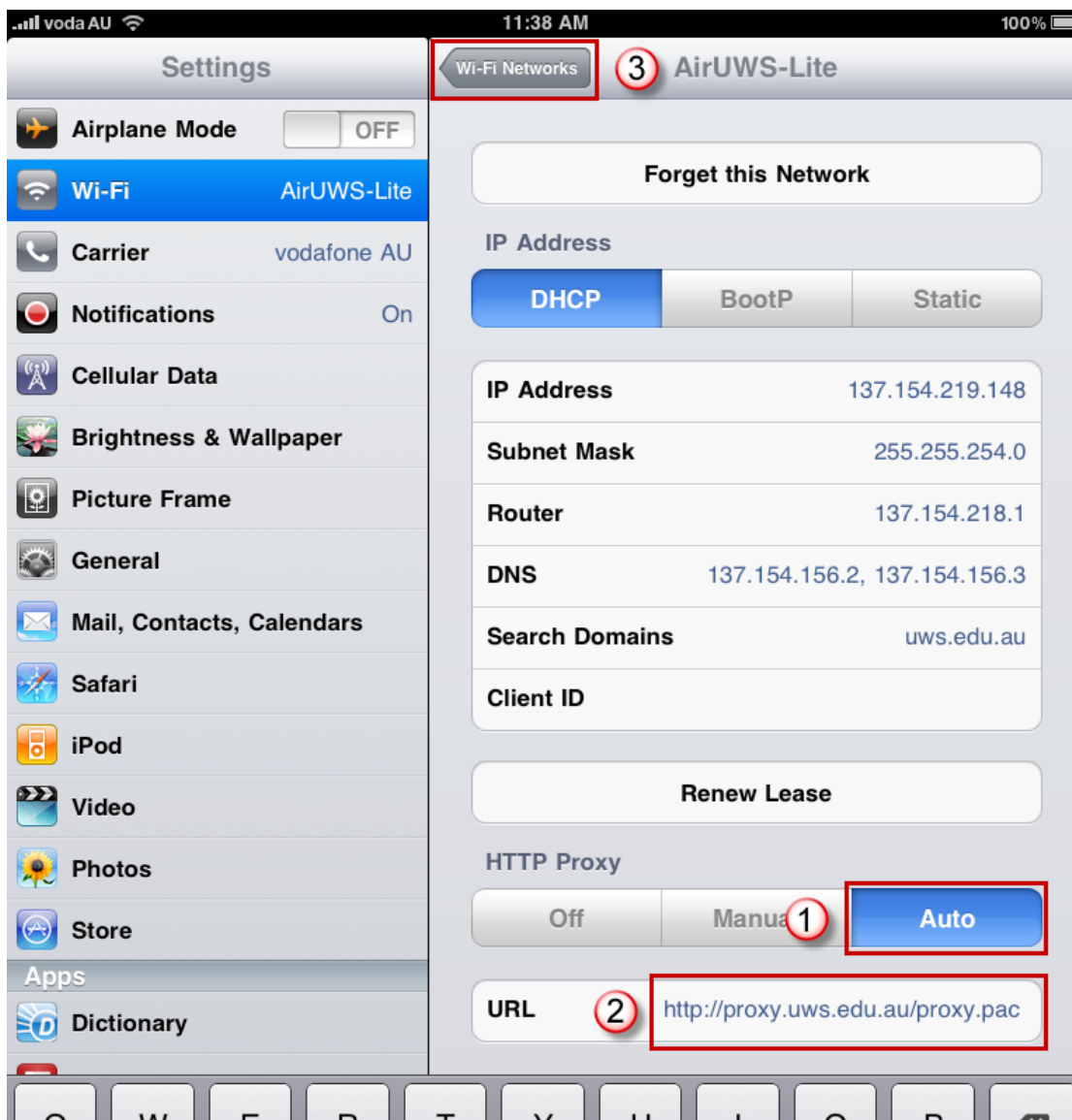
Tap the blue arrow next to AirUWS-Lite

Scroll to the bottom and tap **Auto**. Enter the following address in the URL field:

<http://proxy.uws.edu.au/proxy.pac>.

Testing has shown that the iPad may not remember the proxy settings unless, after entering the proxy address, you tap a different field on the AirUWS-Lite screen to move the cursor from the proxy URL field. If your iPad does not remember the proxy settings, you will not have web access.

Tap **Wi-Fi Networks** to save the settings.



Tap Auto (1), enter the proxy URL (2) and tap Wi-Fi Networks (3)

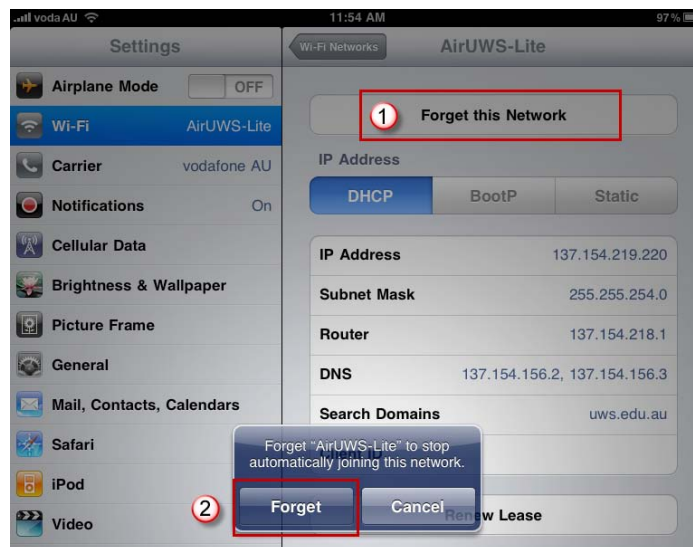
Return to the home screen. Launch Safari (most browsers should work). When prompted, enter your **MyUWSAccount credentials**, and tap **Log In** to access the Internet.



Enter your MyUWSAccount credentials and tap Log In

Disconnecting

When you leave the wireless coverage area, your iPad will automatically disconnect. Alternatively, go back to Settings, select Wi-Fi and then AirUWS-Lite (blue arrow) and tap **Forget this Network**, then tap **Forget**.



Tap Forget this Network (1), then tap Forget (2)

Future logins

If you disconnect by leaving the coverage area, you should only need to open **Settings** → **Wi-Fi Networks** and tap **AirUWS-Lite** to reconnect. If you “forgot the network”, you may find you need to restart the connection process to login.



IT Service Desk	
Phone:	02 9852 5111 (ext 5111)
Email:	itservicedesk@uws.edu.au
Web:	http://www.uws.edu.au/itservicedesk
Self Service job logging:	http://itsm.uws.edu.au
UWS IT Services Catalogue:	http://www.uws.edu.au/its
ITS Fact Sheets	http://www.uws.edu.au/itfactsheets