

network settings (proxy) - firefox

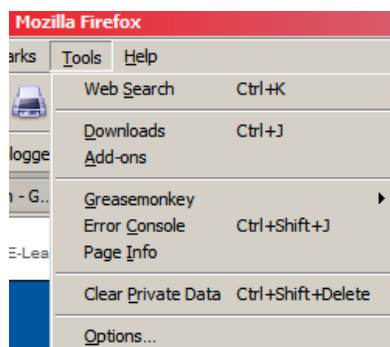
This fact sheet describes configuring Firefox to use the settings required for Internet access when using a UWS network. These instructions will work with recent versions of Firefox, although there may be differences in menu location and appearance.

If you do not configure your web browser to use the UWS proxy while using a UWS network, you will not be able to visit any external web sites.

Note: Recent versions of Netscape and Mozilla will be similar. Firefox, Netscape and Mozilla are not supported at UWS. Screen shots are from Firefox 6.0.2.

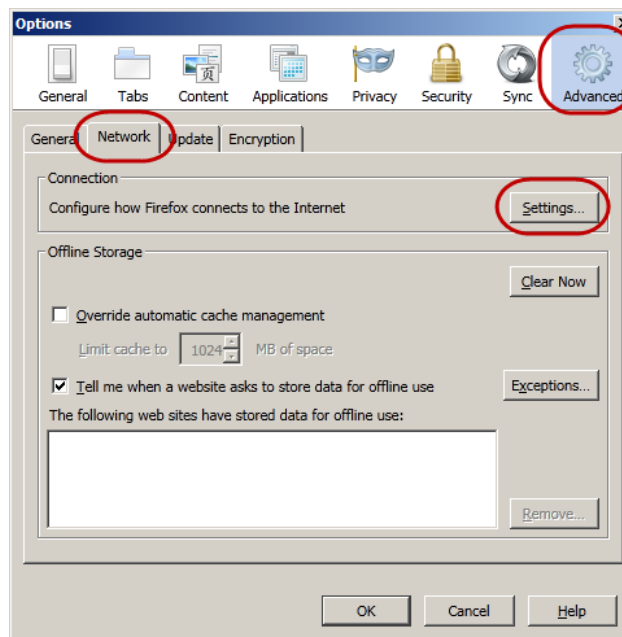
Open **Firefox**.

From the **Tools** menu, choose **Options...** The Options window will appear.



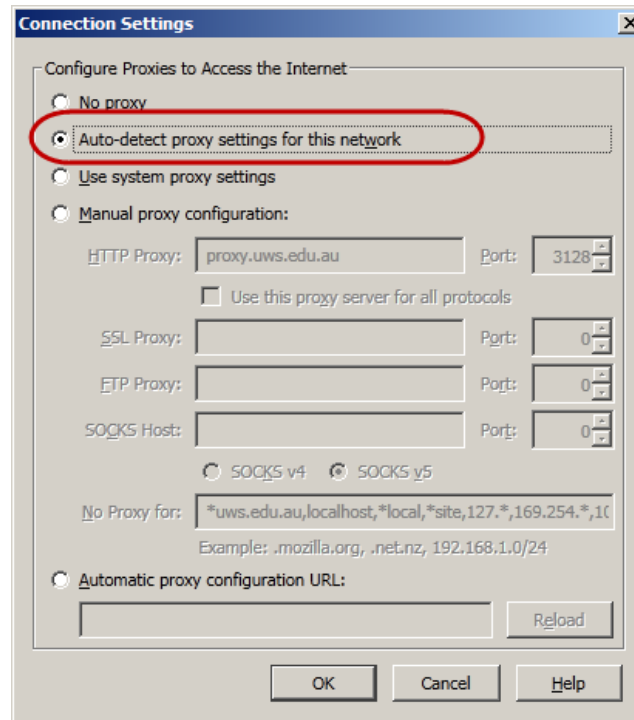
Firefox's Tools menu

Select the **Advanced** icon. Click the **Network** tab, then the **Settings...** button to open the connection settings window.



The options window

Ensure **Auto-detect proxy settings for this network** is checked. Press **OK** to close the Connection Settings window. Press **OK** to close the close the Options window.



Check Auto-detect proxy settings for this network

You have now configured Firefox to use the UWS proxy server.

Off-campus settings

Although automatically detect settings will usually work when connecting to the Internet through private Internet Services Providers (ISPs), you may need to change to the settings recommended by the ISP.



For off campus internet access, use the proxy settings recommended by your Internet Services Provider.

The UWS proxy server cannot be used off-campus.

Manual proxy

Manually setting your browser's proxy configuration is no longer recommended or supported at UWS. Undertake at your own risk.

Software specific proxy settings

In order to receive updates, some software may require users to enter proxy details into the software itself. The settings will apply to that software only, and you should continue to use the browser settings recommended above.

Proxy address: **proxy.uws.edu.au**

Port: **3128**

If required, enter your MyUWSAccount credentials where indicated.



IT Service Desk	
Phone:	02 9852 5111 (ext 5111)
Email:	itservicedesk@uws.edu.au
Web:	http://www.uws.edu.au/itservicedesk
Self Service job logging:	http://itsm.uws.edu.au
UWS IT Services Catalogue:	http://www.uws.edu.au/its
ITS Fact Sheets	http://www.uws.edu.au/itfactsheets