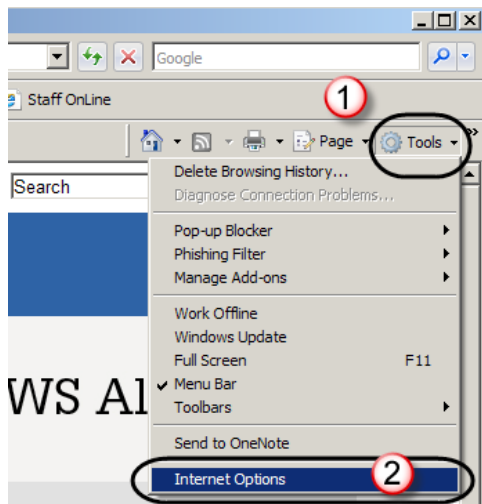


network settings (proxy) - internet explorer

This fact sheet describes configuring Internet Explorer to use the settings required for Internet access when using a UWS network. These instructions will work with recent versions of Internet Explorer, although there may be slight differences in menu location and appearance.

If you do not configure your web browser to use the UWS proxy while using a UWS network, you will not be able to visit any external web sites.

Open **Internet Explorer**.

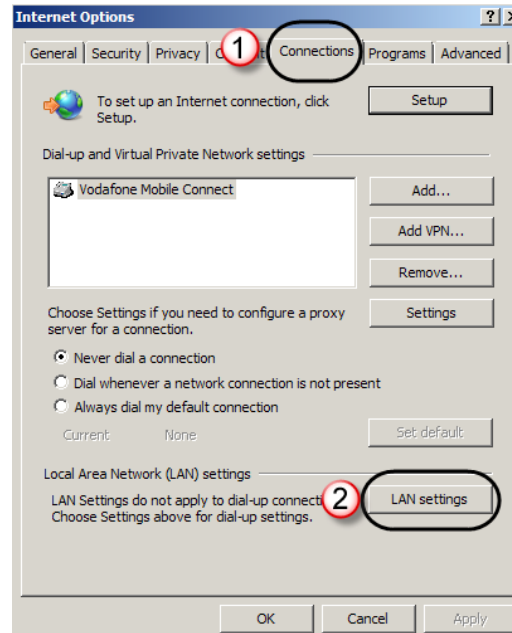


From the **Tools** menu, choose **Internet Options**. A tabbed window will appear. Click the **Connections** tab.

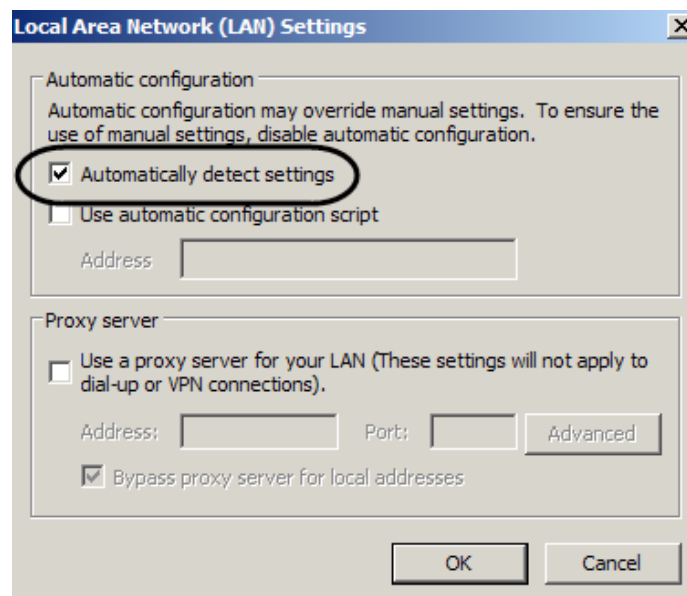
Internet Explorer 7's Tools menu

network settings (proxy) - internet explorer

On the Connections tab, click the **LAN settings... button** and the LAN settings window will appear.



On the **Connections** tab, choose **LAN Settings...**



Ensure **Automatically detect settings** is ticked

Ensure **Automatically detect settings** is ticked. Press **OK** to close the LAN Settings window. Press **OK** again to close the Internet Options window. You have now configured Internet Explorer to use the UWS proxy server.

Off-campus settings



For off campus internet access, use the proxy settings recommended by your Internet Services Provider.

Although automatically detect settings usually works when connecting to the Internet through your private Internet Services Providers (ISP), you may need to change to the settings recommended by the ISP. The UWS proxy server cannot be used off-campus.

Manual proxy

Manually setting your browser's proxy configuration is no longer recommended or supported at UWS. Undertake at your own risk.

Software specific proxy settings

In order to receive updates, some software may require users to enter proxy details into the software itself. The settings will apply to that software only, and you should continue to use the browser settings recommended above.

Proxy address to use: **proxy.uws.edu.au**

Port: **3128**

If needed, enter your **MyUWSAccount credentials** where indicated.



IT Service Desk	
Phone:	02 9852 5111 (ext 5111)
Email:	itservicedesk@uws.edu.au
Web:	http://www.uws.edu.au/itservicedesk
Self Service job logging:	http://itsm.uws.edu.au
UWS IT Services Catalogue:	http://www.uws.edu.au/its
ITS Fact Sheets	http://www.uws.edu.au/itfactsheets